

THE ALL-NEW ŠKODA

KODIAQ



ŠKODA
SIMPLY CLEVER



INTRODUCTION ⁴
EXTERIOR DESIGN ¹⁰
LIGHT DESIGN ¹⁶
INTERIOR DESIGN ²⁰
CONNECTIVITY ²⁴
SIMPLY CLEVER ³⁰
COMFORT ⁴⁸
SAFETY ⁵⁴
PERFORMANCE ⁶⁴
CUSTOMISATION ⁷²
ACCESSORIES ⁸⁴
ŠKODA BRANDED GOODS ⁹²
TECHNICAL SPECIFICATIONS ⁹⁴





INTRODUCING A NEW SPECIES OF SUV

It's in our nature to be in touch with nature – and each other. But if modern life is pulling you away from what matters most, then let the ŠKODA KODIAQ help you reconnect.

An all-new vision of what an SUV should be, the KODIAQ's stunning exterior design is as robust as it is beautiful. Its 4x4 capabilities take on any terrain with effortless ease, while inside a host of connectivity features, generous space and unmatched comfort will make the entire family hungry for adventure. And as always, numerous Simply Clever features ensure that your escapades remain fully practical.

The KODIAQ is yet another example of our philosophy of making beautifully designed cars that are as passenger-focused and a joy to drive now as they were back when we started.

That's Simply Clever. That's ŠKODA.







EXTERIOR DESIGN



REAR VIEW

The silver-black roof rails emphasise the attractiveness of the exterior. The vertical black extensions which merge with the roof spoiler and border the rear window improve aerodynamics. The rear lights penetrate deep into the fenders, thus also perfectly illuminating the car from the side.



SIDE VIEW

The sharp edges combined with smooth surfaces create unique conditions for the effective interplay of light and shadow. The square wheel arches, angular mud flaps with plastic edges and the protective sill covers show that this car is equally at home on dirty roads.

HEADLAMPS AND FOG LAMPS

The concept for the front headlights is one of the KODIAQ model's characteristic elements. The location of the sharply drawn fog lamps at the height of the radiator grille, where they are protected from damage, clearly shows the car's off-road ambitions.



BEAUTY OF THE BEAST

Ready to take on the toughest conditions, the ŠKODA KODIAQ radiates majestic power. Its precise, sharp lines are shaped by ŠKODA's new design language for SUVs, making it distinctive, emotional and timeless. Whether judged on its details or as a whole, it's clear that form and function are in perfect harmony. The KODIAQ is a muscular beauty that combines a robust body with impressive off-road capability.



DOOR SILL STRIPS

The style quotient of the car is underlined by the decorative door sill strips with the KODIAQ inscription - a clear nod to the car's overall blend of form and function.



PLASTIC STRIP

The strip between the "cat's eye" reflectors has an aesthetic as well as practical function. It runs around the edge of the luggage space, protecting the bumper from damage during load handling. A closer look at the strip reveals a honeycomb motif.

PANORAMIC SUNROOF

The KODIAQ opens up new vistas with the electrically-adjustable panoramic sunroof, which enhances the feeling of space.



LIGHT DESIGN



THE ART OF ILLUMINATION

Innovative crystalline design meets innovative technology. With its mysterious beauty, the illuminated KODIAQ represents an impressive experience and is also the uncompromising embodiment of the credo "see and be seen".

FULL LED HEADLAMPS WITH AFS AND FOG LAMPS

Two types of headlamps and fog lamps are available for the KODIAQ. The top-end option is all about LED technology. The LED headlamps offer high-performance and high-energy efficiency. The AFS (Adaptive Frontlight System) adjusts the lighting intensity to specific conditions (e.g. city, motorway or driving in the rain), while the main headlamps boast an eye-catching integrated strip of LED daytime running lights. Under poor light conditions the LED fog lamps come into their own, ensuring your maximum safety.



LED REAR LIGHTS

The rear lights have LED technology as standard, while the crystalline design refers to Czech cubism and the country's glass-making tradition. Their sharp lines and distinctive C-shape, which is typical of ŠKODA cars, makes vehicle stand out confidently.



INTERIOR DESIGN

INNER BEAUTY

Make your space more cosy and comfortable with soft, harmonious ambient lights running along the inside of the car, setting the perfect mood for any journey.



Green ambient lighting



Blue ambient lighting



Red ambient lighting

AMBIENT LIGHTING

It's up to you to choose one favourite colour or to complement each day with a different tone. The ambient lighting offers ten appealing colour options.

FOOT AREA ILLUMINATION

The discrete illumination turns a comfortable space into an exceptional one. Experience ultimate comfort thanks to the interior lights, and enjoy a discreetly lit ambience during your journey.





CONNECTIVITY

ŠKODA CONNECT: TAKE THE ONLINE WORLD WITH YOU

The KODIAQ helps you stay connected wherever you are. Being online fully and permanently means not only having access to entertainment and information, but also possible assistance while on the move. ŠKODA CONNECT is your gateway to a world of unlimited communication possibilities.

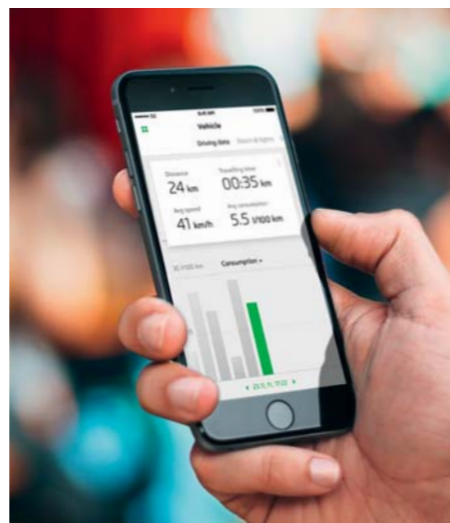
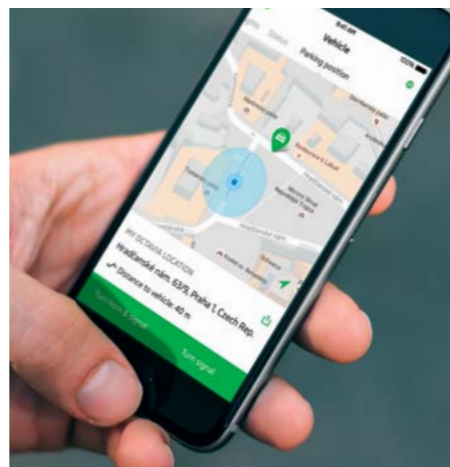


INFOTAINMENT ONLINE

Thanks to these information services, you have an overview of the current traffic situation. It includes navigation, traffic updates, fuel prices, parking space, weather and more.

PARKING POSITION

Retrieve the pinpoint location of your car in large parking spaces from anywhere on your mobile phone, with the address, time and date of parking displayed.



DRIVING DATA

Information about your journey, such as average consumption, average speed, distance and journey time, is sent to the back-end server. You can display your personal driving data and have an overview of all your trips.

EMERGENCY CALL

The KODIAQ's connectivity includes an SOS line. This emergency system is activated by pushing the red button placed on the roof. In case of a crash, an emergency call is made automatically.



ONLINE TRAFFIC INFORMATION

Always take the best route: Up-to-date information gives you a perfect overview of every trip. It also enables you to react to new developments, such as roadworks, accidents or traffic jams.



PETROL STATIONS

You can find out the distance, petrol station type, and the current fuel prices. This information is displayed in real time. The fuel type of the vehicle is automatically detected and displayed.



WEATHER

Get the latest weather report for your current location or destination, with detailed forecasts, including precipitation predictions and warnings.

INFOTAINMENT ON THE GO

Infotainment has moved on in leaps and bounds: You can look forward to an attractive design and plenty of amazing functions, while the KODIAQ seamlessly syncs with your external devices. Better still, your kids will never get bored on a journey.



MyŠKODA APP

Meet Paul, the interactive assistant of the MyŠKODA App (for Android or iOS systems) who can be helpful in various daily situations.

For example, you can use him to access information about your car or for a complete description of what controls what, and what each indicator lamp means, etc. What's more, Paul can also keep an eye on the dates from your planner. Not only will you never forget a meeting, but your assistant will also advise you on how to get there.



PHONE BOX

This practical phone compartment, located in front of the gear stick, creates an amplified signal for your mobile device. At the same time, it wirelessly charges your phone while driving.



COLUMBUS

The Columbus 3D navigation system features comfortable touch control on an 8" display. The device offers many functions, including Bluetooth, SmartLink+ system and WiFi. The integrated phone module with fast LTE internet compatibility is also available. Perfect sound quality is guaranteed by four front and four rear speakers.



SMARTLINK+

With the SmartLink+ system (ŠKODA Connectivity bundle supporting MirrorLink®, Apple CarPlay and Android Auto) the car's infotainment system enables the driver to safely use the phone while driving. Moreover all installed applications that are certified as safe for vehicles are compatible with MirrorLink(R), Apple CarPlay or Android Auto. The SmartLink+ system also includes the SmartGate function. It enables you to connect your smartphone to the car via WiFi to access interesting data about your drive, like driving economy, driving dynamics or service information.*

* Visit our website for usage terms and compatibility information for SmartLink+.



MULTIMEDIA HOLDER

There can only be one driver but those in the back can enjoy the drive just as much. The multimedia holder enables you to securely fit a tablet to the front seat headrest.



CANTON SOUND SYSTEM

Enjoy absolute sound clarity, whether it's music or the spoken word, on the Canton Sound System with ten speakers, including a speaker in the dashboard and subwoofer in the luggage compartment. The total power output is 575 W.



**SIMPLY
CLEVER**

ŠKODA'S LITTLE HELPERS

Life is easier when equipment is practical. The KODIAQ thus comes with features based on your real needs and includes Simply Clever details that are as ingenious as they are intuitive.



UMBRELLA STORAGE COMPARTMENTS

Ingenious compartments with two original ŠKODA umbrellas are fitted inside both front doors. They are designed to let water drain away from the car, keeping the interior dry.

DOOR EDGE PROTECTION

When opening all side doors, plastic strips eject and cover the edges. In this way the KODIAQ protects itself against damage as well as being considerate to other cars. Perfect for tight parking spaces, for instance.



TICKET HOLDER

When you need to display a parking ticket in a visible place, the solution is simple. The car is equipped with a parking ticket holder under the windscreen.



ICE SCRAPER

The ice scraper is mounted on the fuel cap and it's not a problem to replace it there when wet. Here you will also find protection against incorrect fuel filling, designated for cars with a diesel engine.

A POCKET FOR EVERYTHING THAT MATTERS

Children, dogs, bears, toys, snacks, plus situations you cannot anticipate – that's par for the course when travelling with the family. And the KODIAQ can handle it.



JUMBO BOX

The spacious storage compartment is housed in the front armrest. You can, for example, store your electronic items safely inside or cool snacks to keep them fresh. The Jumbo Box can also be equipped with drinks and coin holders.



UNIBAG

The removable Unibag, designed for transporting skis or a snowboard, can be stored in the opening between the luggage compartment and cabin.





UPPER STORAGE COMPARTMENT

You will find this surprisingly spacious compartment with tilting lid in the upper part of the dashboard by the front passenger seat.



LOWER STORAGE COMPARTMENT

The closed tilting storage compartment in the lower part of the dashboard by the front passenger seat can be air-conditioned, so you have a place to store chilled refreshments during your travels.



SUNGLASSES COMPARTMENT

This practical compartment located above the interior rear-view mirror is within the driver's and front passenger's reach.



BOXES UNDER FRONT SEATS

A hidden storage space for various small items is located under the driver and front passenger seats. Available for a car with manually adjusted seats.



BOTTLE AND MOBILE PHONE HOLDERS

We haven't forgotten about the comfort of passengers on the third row of seats. They will appreciate the holders in the luggage compartment side cover.



FRONT DOOR COMPARTMENTS

You will find a 1.5-l bottle holder and a rubber strap in a spacious compartment in the front door. This is also where you can place a removable waste basket.



DRIVER'S STORAGE BOX

The driver can utilise a practical tilting storage compartment located directly below the steering wheel.


REFLECTIVE VESTS

The vests can be located in the storage compartments in the front and rear doors, ensuring they are always within reach.



FOLDABLE TABLES

Built into the backrests of both front seats, the foldable tables with drink holders can be used for more than just refreshments.

A wide-angle photograph of a car's interior, showing the front and rear seats. The seats are upholstered in dark leather with light-colored stitching. The car has a sunroof, and bright light is streaming in from the windows, creating a warm, golden glow. The dashboard and steering wheel are visible on the right side of the frame. A semi-transparent dark overlay is positioned on the left side of the image, containing text.

SPACE TO SHARE

How big is your family? Up to seven people can travel with ease thanks to the version of the KODIAQ model that has an optional third row of seats.

The elegant, functional interior inspires confidence and evokes a peaceful ambience. Digital Voice Enhancement can transmit the driver's and front passenger's voice to the rear part of the car. All the better for reconnecting with family and friends on that great outdoor adventure.

LUGGAGE, WITHOUT THE BAGGAGE

A look behind the 5th door will impress you because the KODIAQ offers unrivalled boot capacity and exceptional variability. In addition, we offer a range of Simply Clever details and solutions which you can choose according to your specific needs.



VIRTUAL PEDAL

How do you open or close the luggage compartment when your hands are full? Just swipe your foot underneath and, hey presto, it will open for you automatically. The virtual pedal enables contact-free access and it's available exclusively with the electrically-controlled 5th door and KESSY (Keyless Entry, Start and exit System).

ELECTRICALLY-CONTROLLED 5TH DOOR

It opens and closes at the mere touch of a button on the remote control or in the driver door, especially handy during unfavourable weather. You can also adjust the upper door position to suit your needs. There is a button for closing the 5th door directly on the door, too.



TOWING DEVICE

The KODIAQ has a foldable towing device with electric release. The switch is in the luggage compartment. The towing capacity of the car is up to 2.5 tons.



LED FLASHLIGHT

A practical removable LED flashlight can be found on the left side of the luggage compartment. It recharges automatically while the engine is running.



ROOM FOR EXPECTED GUESTS

Five-seat interior



CAPACITY

With the five-seat interior layout, you have 720 litres of luggage space and 2,065 litres with the rear seats folded. No wonder it's called 'The Great Indoors'. The rear seats can be folded using a remote release button located in the luggage compartment.



HOOKS

The robust foldable hooks, located on the sides of the luggage compartment, make your bags easier to transport and more secure.



DOUBLESIDED CARPET

You can use the carpet with the elegant fabric side up when not transporting anything that might make your car dirty, and can easily turn it over to utilise the washable rubber side when required.



DOUBLE FLOOR

The double floor places the bottom of the luggage compartment on the loading edge level, facilitating easier luggage handling. In addition, it provides a discrete storage place.



NET PROGRAMME

One horizontal and two vertical nets increase the flexibility of the luggage space while firmly securing objects.

ROOM FOR UNEXPECTED GUESTS

Seven-seat interior



CAPACITY

If you aren't planning a journey with a full load of passengers, you can create the luggage space that you happen to need in the seven-seat version of the car. Lay the third row of seats flat, and you get 630 litres. Lay flat the second row as well, and you get a massive 2005 litres.

HOOKS

Hang up bags on the titling hooks and you will find everything in its right place after the trip.



NET PROGRAMME

The seven-seat version also comes with practical details to make the car even more versatile. In the luggage space you will find hooks for the net programme to help you keep everything tidy in the car and prevent luggage from shifting.



DOUBLE FLOOR

When using the third row of seats, it is necessary to remove the luggage space cover. The double floor provides a special storage space for it, so you don't have to keep it in the garage or at home.



CARGO ELEMENTS

To avoid any undesired movement of luggage while driving, these are stowed away in the compartments behind the rear wheel arches when not in use.

COMFORT



COMFORT IS YOUR CO-DRIVER

The KODIAQ lets you turn a routine trip into an extraordinarily pleasant experience. Treat yourself to some luxury on your journey to work or the shops, for the children when they are going to school, or for trips to see friends. Set out for ordinary, routine destinations with a special feeling.



KESY
Cars equipped with KESY (Keyless Entry, Start and exit System) feature a Start/Stop button on the steering column for keyless ignition and switching off the engine.



STEERING WHEEL WITH HEATING
The multifunctional leather steering wheel, which lets you control the radio, phone and alternatively DSG (Direct Shift Gearbox), can be equipped with heating function, controlled via the infotainment system.



HEADLAMP WASHERS
Integrated telescopic headlamp washers easily take care of dust and mud.



CRUISE CONTROL
In addition to maintaining the preselected speed, cruise control enables you to increase or reduce speed without using the pedals.



PERSONALISATION OPTIONS
The infotainment system allows different drivers to create their own individual preferences. These include, for example, setting the driving mode, the electrically-adjustable driver's seat, air conditioning, radio and navigation system. A personalised car is provided with three keys. When the key is used to unlock the car, the functions are automatically adjusted to the driver's saved settings.



LED BOARDING SPOTS
The Boarding Spots with LEDs, designed to illuminate the entry area, are located on the external side-view mirrors.

3-ZONE CLIMATRONIC

With this state-of-the-art air conditioning system, you can set different temperatures for the driver, co-driver and rear passengers. It's also fitted with a humidity sensor, which reduces windscreen misting, and sun sensor.



FOLDABLE BACKREST

The foldable backrest of the front passenger seat gives the car even greater variability and allows you to transport objects with extraordinary dimensions.



LOUNGE STEP

This angled footrest at the rear attaches to the textile floor mats and makes long trips even more comfortable.

ROLLER BLINDS FOR THE REAR SIDE WINDOWS

Mechanical roller blinds significantly increase passenger comfort in the rear seats on sunny days.



REAR PART OF THE JUMBO BOX

On the rear part of the Jumbo Box you will find a 230V socket and USB slot. If the car has 3-zone air-conditioning, you will also find the control for the rear seat zone here.



SLEEP PACKAGE

Rear passengers will sleep sweetly through a long journey thanks to the Sleep Package. It includes variable headrests of the outer seats for a comfortably supported head posture while sleeping, plus a blanket.



A young woman with long blonde hair is sitting in the driver's seat of a car, looking out the window with a slight smile. The car's interior, including the dashboard and window frame, is visible. The background outside the window shows a blurred green landscape. The word "SAFETY" is overlaid in large, bold, white capital letters on the left side of the image.

SAFETY

THERE'S HELP AT HAND

We have done everything in order to ensure that you arrive at your destination safely. The KODIAQ comes with plenty of assistants allowing you to react to various situations promptly. Some of the systems can even prevent an impending collision all by themselves.



PARK ASSIST
Minimise the hassle of parking in tight spots with Park Assist. It automatically selects an appropriate parking place in a row of parallel or perpendicularly parked vehicles. During parallel parking, it only needs a space 60 cm longer than the car itself.



AREA-VIEW CAMERA
You will feel much more confident behind the steering wheel with four cameras that sense the space around the entire vehicle. They are located in the grill, external side-view mirrors and on the handle of the 5th door. The picture is transmitted in real time to the infotainment display so you can react quicker to whatever comes your way.



TRAFFIC JAM ASSIST
The function is designed to facilitate the driving of DSG-fitted vehicles in traffic jams. By controlling the engine, brakes and steering, it makes the vehicle pull away, brake and turn to copy the movement of the surrounding vehicles (at speeds of up to 60 km/h).



TRAILER ASSIST
Do you need to park your car with a trailer? Trailer Assist makes your parking manoeuvres easier and safer. This system takes control of the car when reversing slowly.



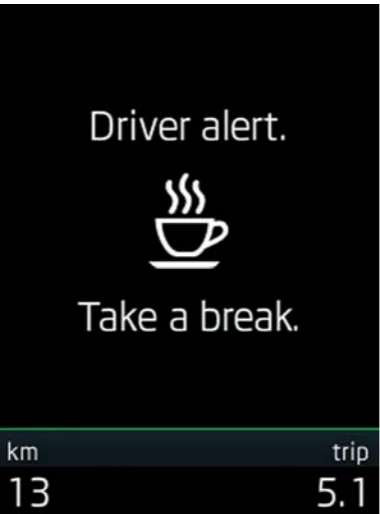
TRAVEL ASSIST

This helper uses co-operation between the multifunctional camera and the navigation system to recognise and display, on the Maxi DOT and navigation displays, certain traffic signs.



AUTO LIGHT ASSIST

Your Light Assist will switch to high beam and back automatically, increasing comfort and safety in traffic.

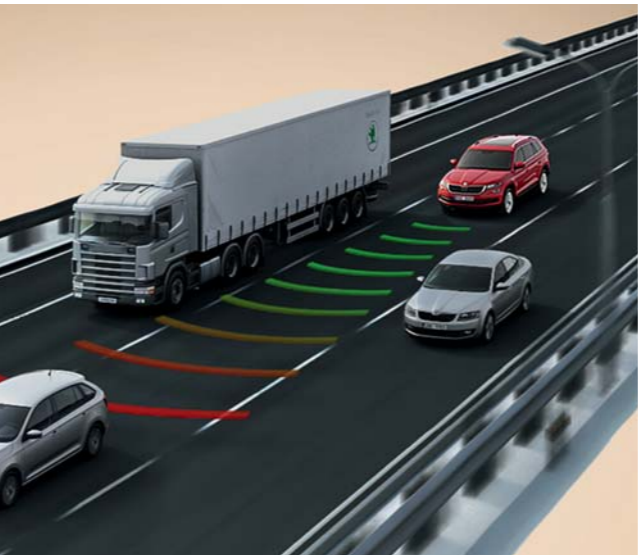


DRIVER ALERT

This clever assistant system evaluates data from the power steering sensors to detect any driver fatigue behaviour. In such cases, the Maxi DOT display warns the driver to take a break.

ADAPTIVE CRUISE CONTROL

Using a radar device in the front grille, in addition to its basic cruise control function, this assistant system maintains a safe distance from vehicles in front of you.



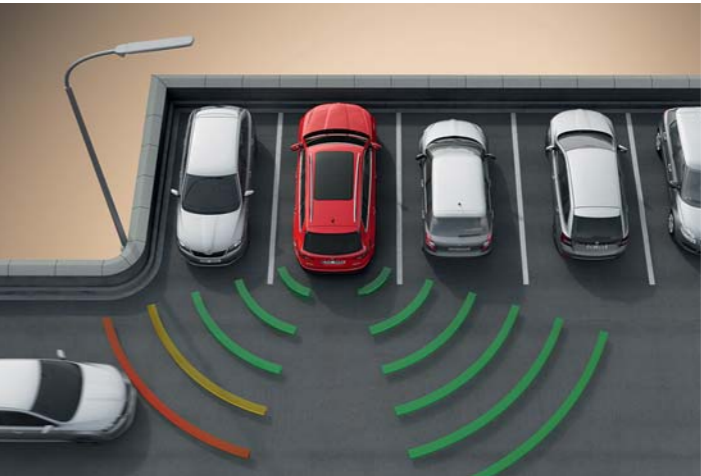
BLIND SPOT DETECT

Using radar sensors in the rear bumper Blind Spot Detect monitors the blind areas behind and beside the car. Based on the distance and speed of the surrounding vehicles, it decides whether or not it should warn the driver.



LANE ASSIST

You can leave the task of keeping the car in the correct lane to Lane Assist. The system is displayed on Maxi DOT.



REAR TRAFFIC ALERT

This assistant, which comes as part of the Blind Spot Detect system and uses the same radar sensors, helps you reverse safely from a parking space during poor visibility. It can even engage the brakes automatically if it detects imminent danger.

SAFETY FIRST. AND SECOND...

In extreme situations, where the driver cannot actively influence the outcome, the car's passive safety elements take over – like the airbags. You can have your car equipped with up to nine of them.



FRONT DRIVER AND PASSENGER AIRBAGS

While the driver airbag is enclosed in the steering wheel, the passenger airbag is located in the dashboard. If needed, this can be deactivated when a child seat is installed on the front seat.



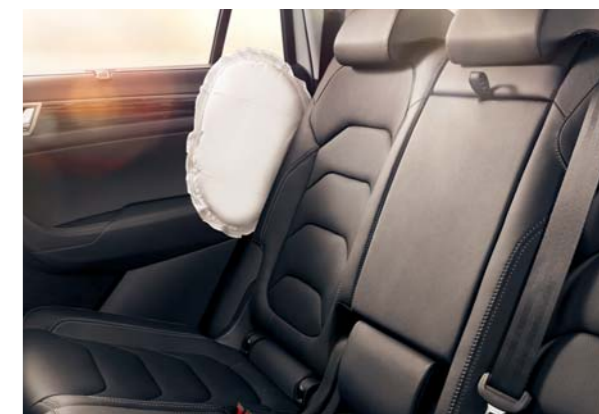
KNEE AIRBAG

This airbag, which is located under the steering wheel column, protects the driver's knees and shins.



HEAD AIRBAGS

Upon activation, head airbags create a wall protecting the front and rear occupants against head injury.



FRONT AND REAR SIDE AIRBAGS

These four airbags protect the pelvis and chest of the driver and other passengers in the event of a side collision.

KEEPS THE CUBS SAFE

The KODIAQ is an excellent choice for everyone who wants to ensure the best safety for their children on the road. The reliable and robust body, equipped with many advanced safety elements, protects little passengers under all circumstances. Enjoy a feeling of maximum assurance and peace of mind.



ELECTRIC CHILD SAFETY LOCK

Just one push of a button and your children's journey will be even safer. The child safety lock will prevent them from opening the rear windows and doors.

A SPACE FOR CHILDREN

Your children will ride in the back in absolute safety and comfort. Putting the children into car seats is pleasant business, too, thanks to the large side doors and lots of space in the rear part of the interior. You can find a mount preparation for two child seats with Isofix safety on the rear side seats.





PERFORMANCE

FORCE OF NATURE

Every family has a different story: Frequent trips to the mountains, or long drives along the motorway. Towing a trailer. An urban adventure or off-road expedition. Whatever the story, we have the right alternative for every family. And in every case we offer dynamism combined with excellent fuel consumption.



DYNAMIC CHASSIS CONTROL

The adaptive chassis continuously evaluates and responds to various driving situations (braking, acceleration, turning), adapting the damping and steering characteristics. As part of the infotainment menu, it allows you to select one of six modes according to your specific requirements: Normal, Comfort, Eco, Sport, Individual or Snow (exclusively for 4x4). One press of a button is enough to turn the KODIAQ from a comfort carriage into a master of serpentine roads.



PETROL ENGINES

The petrol engines on offer are 92kW, 110kW and 132kW. One interesting option on offer is the 2.0 TSI/132kW engine with B-cycle, designed to reduce fuel consumption and emission levels in partial load-operation.

TRANSMISSION

Depending on the engine version, the car can be equipped with manual 6-speed transmission or 6-speed as well as 7-speed DSG (Direct Shift Gearbox).



DIESEL ENGINES

With regard to the environment and emission standard (EU6), the diesel engines 85 kW, 110 kW and 140 kW use Selective Catalytic Reduction. This system injects AdBlue® to reduce mono-nitrogen oxides (NOx). The volume of the AdBlue® tank is 13.7l and the consumption depends on the driving style.

ADAPTS TO ANY ENVIRONMENT

The KODIAQ with 4x4 drive has an adventurous spirit and great potential. Naturally you will appreciate its great handling during every journey, but you'll enjoy it most of all off-road. High hills, deep valleys, gravel, mud, snow, potholes? No problem.



ALL-WHEEL DRIVE

The 4x4 drive is provided by an inter-axle electronically-controlled multi-plate clutch. The coupling of the rear axle is automatic, so under normal conditions the car can utilise the advantages of front-wheel drive, and under extreme conditions the excellent traction of the 4x4 drive.



SNOW MODE

The Driving Mode Select for the 4x4 version includes Snow Mode, which ensures good handling even on low-grip surfaces.



OFF-ROAD MODE

With the intelligent Off-Road-Mode system, which operates at speeds of up to 30 km/h, you can handle even extreme terrain. It is designed to adjust the characteristics of the engine, electronic assistants and stability control systems. The activated functions are shown on the infotainment display.



DSG AND 4X4

Whatever the conditions throw at you, enjoy absolute comfort and fuel efficiency with 4x4 drive and automatic 7-speed or 6-speed DSG (Direct Shift Gearbox).





A top-down view of various mushrooms scattered across a weathered wooden plank surface. The mushrooms include several large, light-colored boletes with thick stems, smaller brown-capped mushrooms, bright orange chanterelles, and dark gilled mushrooms. Some are whole, while others are sliced, showing their internal structures. The lighting is bright, casting soft shadows.

CUSTOMISATION

ACTIVE

The standard equipment of the Active version includes external side-view mirrors and door handles in black, tinted windows, rear LED lights, LED daytime running lights and 3rd LED brake lamp. In addition, there's remote-control central locking, Swing radio, electrically-controlled front and rear windows, air conditioning, sunglasses compartment, electromechanical parking brake, plus more.



ACTIVE BLACK/BLACK INTERIOR
Nano Grey Metallic décor
Ullu Grey fabric upholstery



ACTIVE BLACK/BLACK INTERIOR
Nano Grey Metallic décor
Ullu Grey fabric upholstery

AMBITION

The standard equipment of the Ambition version includes external side-view mirrors and door handles in body colour, black roof railings, leather steering wheel and gear stick knob, Door Edge protection, front foot rest area illumination, Jumbo Box, umbrella storage compartments in front door incl. umbrellas, net programme in luggage compartment and more.



AMBITION BLACK/BLACK INTERIOR
Anthracite Light Brushed décor
Raven Black fabric upholstery



AMBITION BLACK/BLACK INTERIOR
Anthracite Light Brushed décor
Raven Black fabric upholstery



AMBITION BLACK/BLACK INTERIOR
Mistral décor
Raven Toscana fabric upholstery

STYLE

The standard equipment of the Style version includes chrome side window frames, KESSY (Keyless Entry, Start and exit System), front and rear foot rest area illumination, storage compartments under the front seats, lumbar support for front seats, Maxi DOT, Climatronic dual-zone air conditioning, Park distance control, plus more.



STYLE BLACK/BLACK INTERIOR
Mythos Glossy Black décor
Black perforated leather upholstery

STYLE BLACK/BEIGE INTERIOR
Waves décor
Raut Beige
Beige fabric/leather upholstery



STYLE BLACK/BLACK INTERIOR
Mythos Glossy Black décor
Black (leather sport seats) upholstery
Supersport steering wheel



STYLE BLACK/BEIGE INTERIOR
Waves décor
Beige Alcantara® upholstery



STYLE BLACK/BLACK INTERIOR
Mythos Glossy Black décor
Black Alcantara® upholstery
Supersport steering wheel



UPHOLSTERY

Customisation

Active Ullu Grey (fabric)

Ambition Raven Toscana (fabric)



Style Moonlight Black (fabric)

Ambition Raven Black (fabric)
Style Beige (Alcantara®)

Style Moonlight Beige (fabric)



Style Beige (perforated leather)

Style Black (perforated leather)



Style Black (Alcantara®)
Beige (fabric/leather)

Black (leather)

Beige (leather)



Black (fabric/leather)

Style Black (leather) sport seats

Customisation

CORRIDA RED UNI



JUNGLE GREEN METALLIC



MAGNETIC BROWN METALLIC



MAGIC BLACK METALLIC



PACIFIC BLUE UNI



MATO BROWN METALLIC



CAPPUCCINO BEIGE METALLIC



BUSINESS GREY METALLIC



LASER WHITE UNI



BRILLANT SILVER METALLIC



QUARTZ GREY METALLIC



CANDY WHITE UNI



MOON WHITE METALLIC



LAVA BLUE METALLIC



COLOURS

WHEELS

Steel wheels 17" BORNEO



Alloy wheels 17" RATIKON



Alloy wheels 17" MITYKAS



Alloy wheels 18" TRITON



Alloy wheels 18" ELBRUS



Alloy wheels 18" TRINITY



Alloy wheels 19" SIRIUS silver



Alloy wheels 19" SIRIUS anthracite



Alloy wheels 19" TRIGLAV





ACCESSORIES

ENHANCE YOUR ADVENTURE

Get ready to explore, re-discover and reconnect. All you need is to adapt the car to the specific wants and needs of your family. ŠKODA Original Accessories, which can increase the safety, practicality and charm of your car, are the best solution. To see our complete offer, contact your nearest authorised ŠKODA partner.



CHILD SEAT

The Kidfix II XP child seat is, in addition to Isofix belts, attached using the Top Tether system on its rear side. The seat has three adjustable positions (sitting, resting and lying) and is designed for children from 9 kg up to 18 kg.

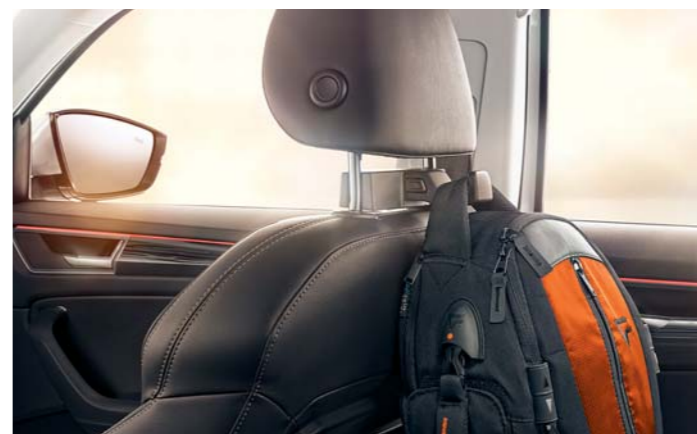
DOG SAFETY BELT

If one of your standard passengers is a dog, we recommend equipping your car with a special safety belt.



SMART HOLDER – HANGER

The clothes hanger, which can be mounted to the front seat headrests, is an extremely practical accessory, especially for those who travel to work wearing a suit.



SMART HOLDER – HOOK

Handbags or backpacks don't have to take up space on the back seats. Hang them from the smart holder hook fixed to the front headrests.



SMART HOLDER – MULTIMEDIA

The holder for an external device, which can be mounted on the front seat headrests, will definitely be appreciated by the rear seat passengers.



PLASTIC BOOT DISH

If you often carry things that might soil the luggage compartment, the plastic dish with raised edges and aluminum partition is the perfect solution, as it can be easily removed and washed.



DECORATIVE DOOR SILL COVERS

The accessories range also includes stylish and practical door sill strips with aluminum inserts in the front.



DECORATIVE VALVE CAPS

With the decorative tire valve caps your car will look stylish down to the smallest detail.



ŠKODA BRANDED GOODS

Choose from our original collection of gift items, which have a lot in common with the KODIAQ model. They are as stylish and ingenious as they are comfortable. For more ŠKODA branded goods, come and visit eshop.skoda-auto.com



| TECHNICAL SPECIFICATIONS | 1.4 TSI/92 kW | 1.4 TSI/110 kW ACT | 1.4 TSI/110 kW 4x4 ACT | 1.4 TSI/110 kW 4x4 | 2.0 TSI/132 kW 4x4 | 2.0 TDI/85 kW | 2.0 TDI/110 kW | 2.0 TDI/110 kW 4x4 |
|---|---|---|---|---|---|--|---|--|
| | Turbocharged petrol engine, direct injection system | Turbocharged petrol engine, direct injection system | Turbocharged petrol engine, direct injection system | Turbocharged petrol engine, direct injection system | Turbocharged petrol engine, direct injection system | Turbocharged diesel engine with common rail system | Turbocharged diesel engine with common rail system | Turbocharged diesel engine with common rail system |
| ENGINE | | | | | | | | |
| Cylinders/Cubic capacity (cc) | 4/1,395 | 4/1,395 | 4/1,395 | 4/1,395 | 4/1,984 | 4/1,968 | 4/1,968 | 4/1,968 |
| Max. performance/Revs (kW/min ⁻¹) | 92/5,000–6,000 | 110/5,000–6,000 | 110/5,000–6,000 | 110/5,000–6,000 | 132/3,900–6,000 | 85/2,750–4,200 | 110/3,500–4,000 | 110/3,500–4,000 |
| Max. torque/Revs (Nm/min ⁻¹) | 200/1,400–4,000 | 250/1,500–3,500 | 250/1,500–3,500 | 250/1,500–3,500 | 320/1,400–3,940 | 320/1,750–2,750 | 340/1,750–3,000 | 340/1,750–3,000 |
| Air pollution regulation | EU6 | EU6 | EU6 | EU6 | EU6 | EU6** | EU6** | EU6** |
| Fuel | Petrol, RON min. 95 | Petrol, RON min. 95 | Petrol, RON min. 95 | Petrol, RON min. 95 | Petrol, RON min. 95 | Diesel | Diesel | Diesel |
| PERFORMANCE | | | | | | | | |
| Maximum speed (km/h) | 190 (189) | 198 (197) | 197 (196) | 194 (192) | 207 (205) | 183 | 199 (198) | 197 (195) |
| Acceleration 0–100 km/h (s) | 10.5 (10.8) | 9.6 (9.7) | 9.8 (9.9) | 9.9 (10.1) | 8.0 (8.2) | 11.5 (11.7) | 10.1 (10.3) | 9.5 (9.8) |
| Fuel consumption 99/100 (l/100 km) | | | | | | | | |
| – urban | 7.5/7.4* (7.6/7.5*) | 7.5/7.4* | 8.3/8.2* | 8.5/8.4* | 9.1/9.0* | – | 5.8/5.7* | 6.4/6.3* (6.5/6.4*) |
| – extra-urban | 5.3/5.2* (5.4/5.3*) | 5.6/5.5* | 6.0/5.9* | 6.3/6.2* | 6.4/6.3* | – | 4.6/4.5* | 4.8/4.7* (4.9/4.8*) |
| – combined | 6.1/6.0* (6.2/6.1*) | 6.3/6.2* | 6.9/6.8* | 7.1/7.0* | 7.4/7.3* | 5.0 | 5.0/4.9* | 5.4/5.3* (5.5/5.4*) |
| CO ₂ emissions (g/km) | 139/137* (141/139*) | 143/141* | 155/153* (156/154*) | 163/161* | 170/168* | 129/127* | 131/129* | 141/139* (144/142*) |
| Turning circle diameter (m) | 12.2 | 12.2 | 12.2 | 12.2 | 12.2 | 12.2 | 12.2 | 12.2 |
| POWER TRANSMISSION | | | | | | | | |
| Type | Front-wheel drive | Front-wheel drive | 4x4 | 4x4 | 4x4 | Front-wheel drive | Front-wheel drive | 4x4 |
| Clutch | Hydraulic single-disc clutch | Twin coaxial clutch, electro-hydraulically operated | Hydraulic single-disc clutch | Twin coaxial clutch, electro-hydraulically operated | Twin coaxial clutch, electro-hydraulically operated | Hydraulic single-disc clutch | Twin coaxial clutch, electro-hydraulically operated | Hydraulic single-disc clutch |
| Transmission | Manual 6-speed | Automatic 6-speed DSG | Manual 6-speed | Automatic 6-speed DSG | Automatic 7-speed DSG | Manual 6-speed | Automatic 7-speed DSG | Manual 6-speed |
| WEIGHT | | | | | | | | |
| Kerb weight – in standard version with a 75kg driver (kg) | 1,502 (1,545) | 1,546 (1,589) | 1,610 (1,653) | 1,625 (1,668) | 1,695 (1,738) | 1,625 (1,668) | 1,667 (1,710) | 1,705 (1,748) |
| Payload – incl. a driver and extra equipment (kg) | 650 (734) | 650 (733) | 675 (757) | 675 (756) | 675 (752) | 650 (710) | 655 (752) | 675 (710) |
| Total weight (kg) | 2,077 (2,255) | 2,121 (2,299) | 2,210 (2,368) | 2,225 (2,383) | 2,295 (2,453) | 2,200 (2,303) | 2,247 (2,425) | 2,305 (2,383) |
| Trailer load without brakes (max. kg) | 750 | 750 | 750 | 750 | 750 | 750 (–) | 750 | 750 (–) |
| Trailer load with brakes – 12% (max. kg) | 1,600 | 1,800 | 2,000 | 2,000 | 2,200 (2,000) | 1,800 (–) | 2,000 | 2,000 (–) |
| Tank capacity (l) | 58 | 58 | 60 | 60 | 60 | 58 | 58 | 60 |

() Applies to the 7-seater version.
* Applies to vehicle with tyres with low rolling resistance.
– Data was not available at the time of going to print.
ACT – Active Cylinder management Technology.

** Compliance with the EU6 emission standard is achieved by SCR system (Selective Catalytic Reduction), which injects AdBlue® to reduce mono-nitrogen oxides (NOx).
Tank of AdBlue® has volume of 13l and touring range of 13,000 km.

All engines feature the Start-Stop system and energy recovery functionality.

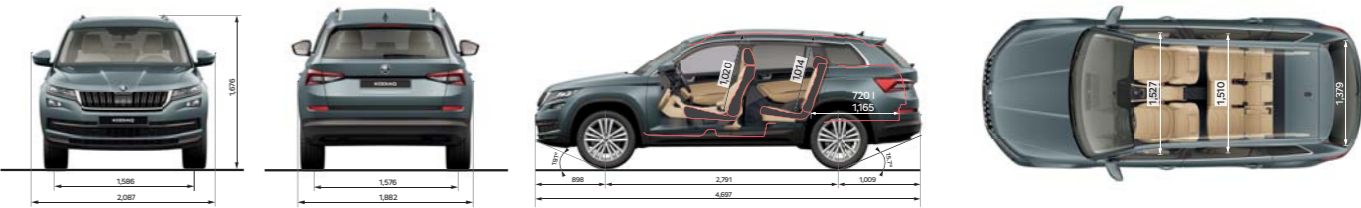
| 2.0 TDI/110 kW 4x4 | 2.0 TDI/140 kW 4x4 |
|---|---|
| Turbocharged diesel engine with common rail system | Turbocharged diesel engine with common rail system |
| 4/1,968 | 4/1,968 |
| 110/3,500–4,000 | 140/3,500–4,000 |
| 340/1,750–3,000 | 400/1,750–3,250 |
| EU6** | EU6** |
| Diesel | Diesel |
| 194 (192) | 210 (209) |
| 10.2 (10.1) | 8.9 (9.1) |
| 6.8/6.7* | 6.6 |
| 5.2/5.1* | 5.3 |
| 5.7/5.6* | 5.7 |
| 149/147* | 150 (151) |
| 12.2 | 12.2 |
| 4x4 | 4x4 |
| Twin coaxial clutch, electro-hydraulically operated | Twin coaxial clutch, electro-hydraulically operated |
| Automatic 7-speed DSG | Automatic 7-speed DSG |
| 1,740 (1,783) | 1,752 (1,795) |

| | |
|---------------|---------------|
| 675 (768) | 675 (767) |
| 2,340 (2,498) | 2,352 (2,510) |
| 750 | 750 |
| 2,500 (2,000) | 2,500 (2,000) |
| 60 | 60 |

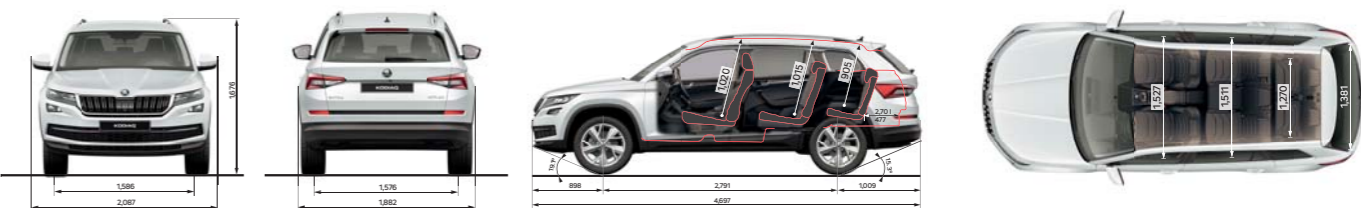
FURTHER SPECIFICATIONS

| Body | | Exterior dimensions | |
|---------------------------------|---|--|---------------------------------|
| Type | 5/7-seater, 5-door, 2-compartment | Length/width (mm) | 4,697/ 1,882 |
| Drag coefficient C _w | 0.323–0.334 (0.324–0.341) according to engine version | Height (mm) | 1,676 (1,673) |
| Chassis | | Wheel base (mm) | 2,791 |
| Front axle | McPherson suspension with lower triangular links and torsion stabiliser | Track front/rear (mm) | 1,586/1,576 |
| Rear axle | Multi-element axle, with longitudinal and transverse links, with torsion stabiliser | Clearance (mm) | 187 (188) |
| Braking system | Hydraulic dual-diagonal circuit braking system vacuum assisted with Dual Rate | Interior dimensions | |
| – front brakes | Disc brakes with inner cooling and with single-piston floating calliper | Lateral room front/rear (mm) | 1,527/1,510 (1,527/1,511/1,270) |
| – rear brakes | Disc brakes | Effective head room front/rear (mm) | 1,020/1,014 (1,020/1,015/905) |
| Steering | Direct rack-and-pinion steering with electro-mechanical power steering | Luggage storage space (max. l) | |
| Wheels | 7.0J x 17" | Without spare tyre, with rear seat backrests – | |
| Tyres | 215/65 R17 | upright/down | 720/2,065 (270/2,005) |

5-SEATER VERSION



7-SEATER VERSION



**IF YOU'VE ENJOYED READING ABOUT IT
— IMAGINE DRIVING IT**

CALL US TO ARRANGE A TEST DRIVE



K10220 02/17



Your ŠKODA partner:

